

EMERGE

New District Partnership Request for Information

PARTNERSHIP SUMMARY

EMERGE is seeking to partner with new school districts in the greater Houston area to empower and prepare high-performing students from underserved communities to attend and graduate from selective colleges and universities. Details of programming and partnership are contained in this document. To request more information or to express interest in a partnership with EMERGE, please complete the interest form, linked at the end of this document.

EMERGE PROGRAM DESCRIPTION AND GOALS

Summary

Founded in 2010, EMERGE is a nationally recognized college-access organization changing the life trajectories of thousands of students across Aldine ISD, Houston ISD, Klein ISD, Spring ISD and Spring Branch ISD. EMERGE directly addresses the “undermatching” phenomenon in which only 25% of high achieving students from low-income communities choose to apply to the nation’s most selective colleges and universities, despite having the qualifications to attend (*True Merit*, Jack Kent Cooke Foundation). This prevents them from accessing the multitude of benefits that these universities offer which can include a full financial need scholarship, extensive support services, higher graduation rates, and increased social capital and earnings potential.

EMERGE has the powerful impact of closing this “matching” gap through our unique district partnership model, best-in-class advising, selective college exposure, and college persistence partnerships, which empower and prepare our students to attend and graduate from selective college and universities across the nation.

Program Scope

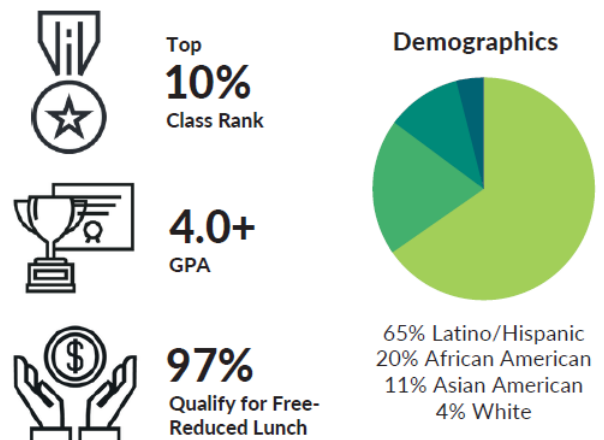
Who we work with

EMERGE partners with traditional public school districts to identify and recruit high-performing students from low-income communities to join the program. We work together to eliminate barriers and build systems to ensure more students have the information, tools, and support to apply to the nation’s top colleges and universities.

Most EMERGE high-school students are in the top 10% class rank, have a 4.0+ GPA, and embody qualities that position them to become trailblazers in their districts and communities.

What we do

Through our programming, we prepare every EMERGE senior to be one of the most competitive college applicants in the country. To do this, we reduce the student to college counselor ratio from 400:1 to



60:1 and focus on elevating the student profile. Between 10th and 12th grade, our team provides course and extracurricular advising, bi-weekly after school sessions, SAT preparation, financial aid information, support to enroll in a high impact summer program, and the opportunity to participate in a week-long trip touring colleges across the country. Post high school graduation, our college success program supports scholars to persist through college and to achieve on-time graduation with minimal debt.

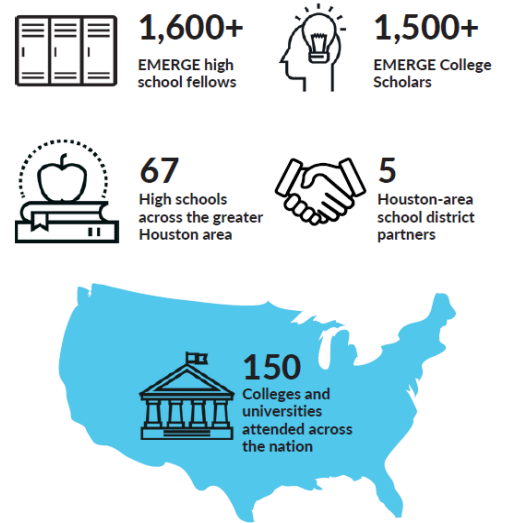
Program Goals

Our goal is simple: we aim to see more students from underserved communities attend and thrive in a selective college setting. Through EMERGE’s holistic and innovative high school fellowship and college success programs, 94% of EMERGE students matriculate to a four-year college or university and 74% of EMERGE students successfully matriculate to a selective college or university. EMERGE students graduate at 8 times the national average for first-generation students from low-income communities. Moreover, more than 40% of EMERGE students graduate with zero student debt.

THE EMERGE IMPACT

Since 2010, EMERGE has achieved remarkable, rapid growth, from serving 14 students at one high school to serving over 3,000 students across 67 high schools, 5 school districts and 150 top-tier college and universities across the country.

Today we have over 600 incredible alumni, many of whom are building successful careers at prestigious companies like Deloitte, Boeing, IBM, the New York Times, and Dell. Over 1,500 EMERGE students are currently attending some of the nation’s top colleges and universities like Yale, Stanford, Dartmouth, Brandeis, and Northwestern.



DISTRICT PARTNERS

Current District Partnerships

In partnership with public school districts, our goal is to spread selective college knowledge and support through our program, and to share best practices and systems so that every eligible student in the school district can benefit from our work together. We currently serve five districts in the Houston area.



Houston ISD



Spring Branch ISD



Spring ISD



Aldine ISD



Klein ISD

	Houston ISD	Spring Branch ISD	Spring ISD	Aldine ISD	Klein ISD
Superintendent:	Millard House II	Dr. Jennifer Blaine	Dr. Lupita Hinojosa	Dr. LaTonya Goffney	Dr. Jenny McGown
Total Student Population:	196,550	33,233	33,537	63,146	53,000
EMERGE Launch Date:	2010	2015	2018	2019	2019
EMERGE High School Fellows:	1050	125	150	160	120

What our partner districts have in common

Our ideal district for partnership is a traditional public school district that demonstrates:

- A need and opportunity for the district and community, i.e.:
 - District data shows there is a need for selective college advising and programming
 - At least 30% of the district's students qualify for Free and Reduced Lunch or are classified as economically disadvantaged
- Alignment between EMERGE's mission and the strategic direction of the district and vision of the Superintendent and Board
- Ability to contribute district funds to the program

WHERE WE ARE HEADED

We deeply believe that the most brilliant minds in our country are born in every zip code and attend every high school in Texas. We want to continue our work in spreading selective college knowledge to other public-school districts across the state, with the ultimate goal of decreasing the number of students that undermatch and increasing the number of low-income high-achieving students on selective college campuses.

By 2027, we aim to more than double the number of students we serve and the districts we partner with. To achieve this ambition, we intend to partner with additional school districts across the greater Houston area, in communities where the families, the philanthropic community, and the public school district share a desire to increase selective college enrollment and graduation. Currently, we are assessing districts to determine where the expansion of our program could have the deepest impact. *Could this be your district?*

PARTNERSHIP NEXT STEPS

We are in the process of seeking out new district partnerships to strengthen and expand our vision. Below is our timeline for partnership implementation, with a goal to launch by the fall of 2023.



Submission Instructions

As you consider EMERGE, we welcome the opportunity to review your district's data and identify the ways in which EMERGE can make an impact.

To request more information or express interest in a partnership with EMERGE, please complete the form linked below by Monday, December 12, 2022.

[EMERGE INTEREST FORM](#)

For specific questions, you can contact us via email at emergepartners@emergefellowship.org. We look forward to the opportunity to work with you!